

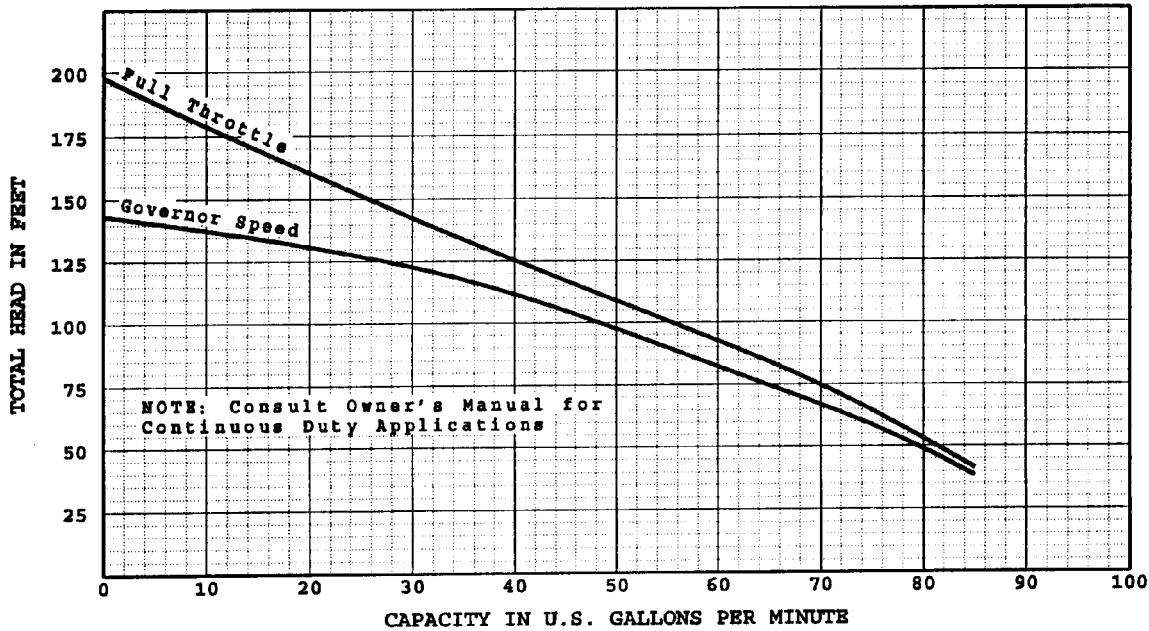


ENGINE DRIVE
AIR COOLED
SELF PRIMING

350-3

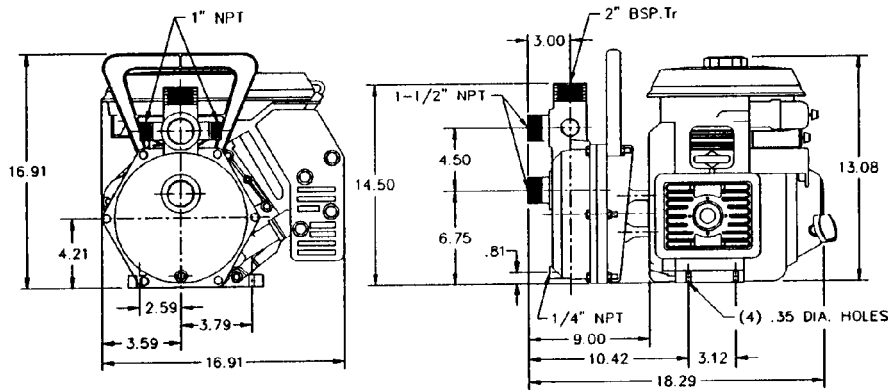
Impeller Diameter: 5.900 in.

C-3529 12/20/93



Supersedes: NEW

Based on Fresh Water @ 68 deg. F



Drawing Not to Scale

All Dimensions in Inches

SPECIFICATIONS	MATERIALS OF CONSTRUCTION	SUPERSEDES
Max. Suction Lift _____ 15 ft	Casing _____ Die-cast Aluminum	Section _____
Max. Liquid Temperature _____ 200 deg. F	Impeller _____ Die-cast Aluminum	Dated _____ NEW
Max. Diameter Solids _____ 0.40 in	Seal Housing _____ Die-cast Aluminum	Page _____
Engine _____ Tecumseh 3 HP	Shaft Sleeve _____ Stainless ASTM A581-A582 Type 303	Date 12/20/93
	Diffuser _____ Die-cast Aluminum	Section AC
	Neckring _____ Stainless Steel	Page 16.0
	Mech. Seal _____ 316 Stainless Hardware/"Buna-N" Ceramic Seat, Carbon Rotating Face	

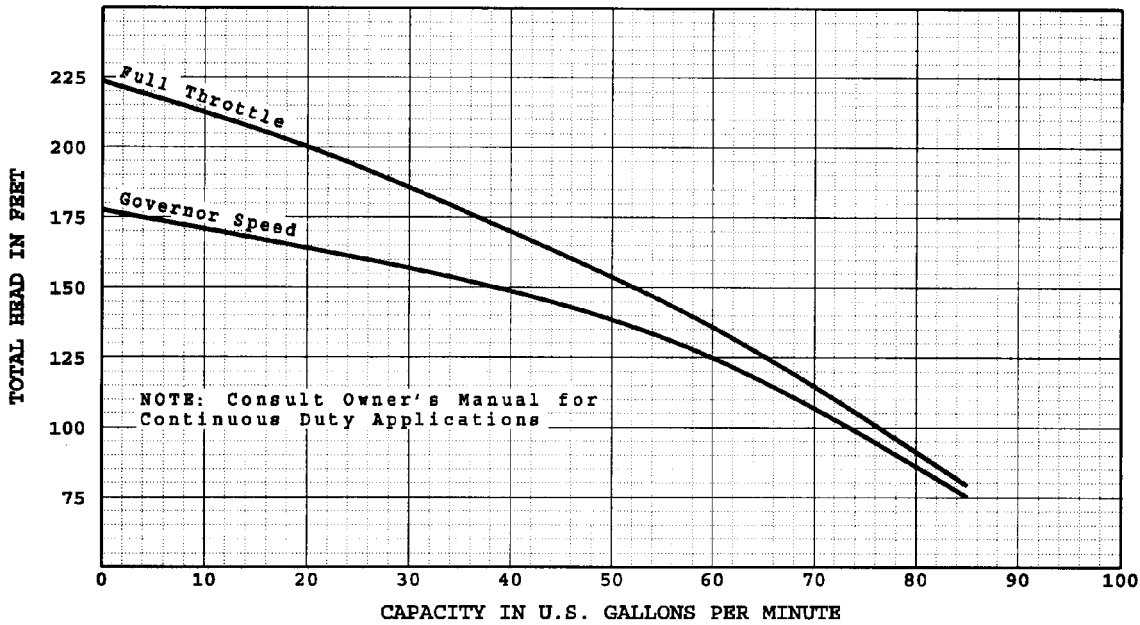


ENGINE DRIVE
AIR COOLED
SELF PRIMING

550-5

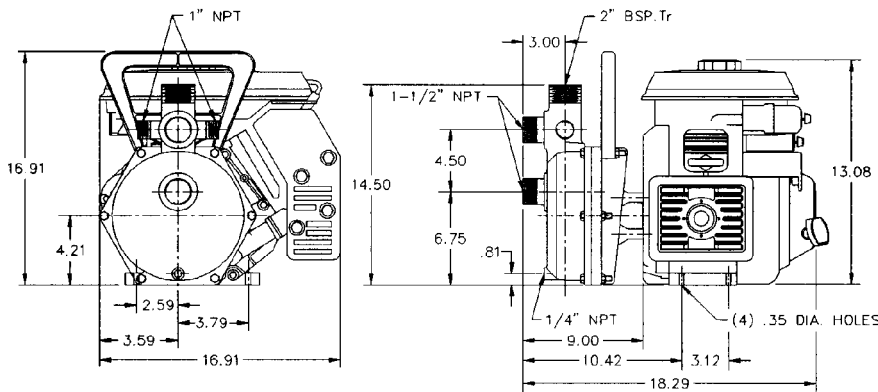
Impeller Diameter: 6.500 in.

C-3531 12/20/93



Supersedes: NEW

Based on Fresh Water @ 68 deg. F



Drawing Not to Scale

All Dimensions in Inches

SPECIFICATIONS	MATERIALS OF CONSTRUCTION	SUPERSEDES
Max. Suction Lift _____ 25 ft	Casing _____ Die-cast Aluminum	Section _____
Max. Liquid Temperature _____ 200 deg. F	Impeller _____ Die-cast Aluminum	Dated _____ NEW
Max. Diameter Solids _____ 0.31 in	Seal Housing _____ Die-cast Aluminum	Page _____
Engine _____ Tecumseh 5 HP	Shaft Sleeve _____ Stainless ASTM A581-A582 Type 303	Date 12/20/93
	Diffuser _____ Die-cast Aluminum	Section AC
	Neckring _____ Stainless Steel	Page 18.0
	Mech. Seal _____ 316 Stainless Hardware/"Buna-N" Ceramic Seat, Carbon Rotating Face	

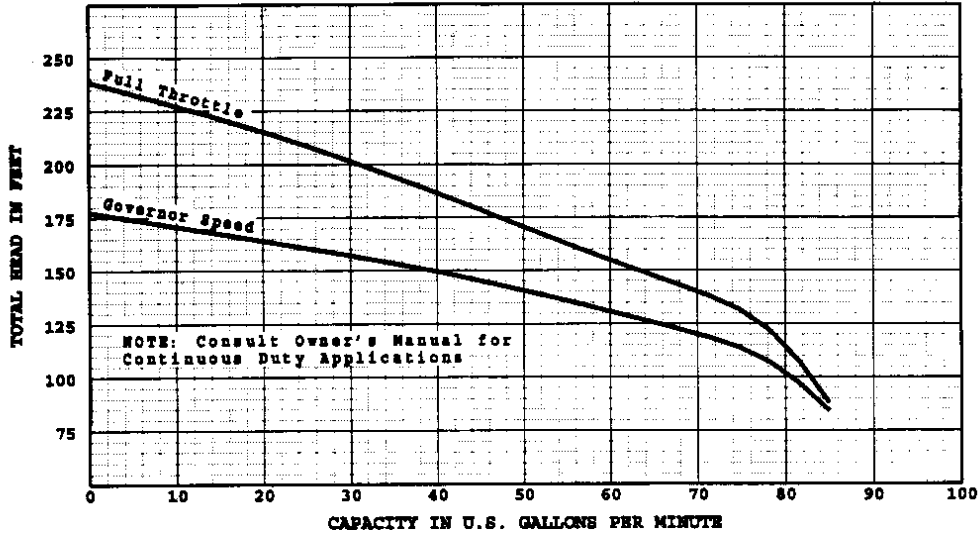


ENGINE DRIVE
AIR COOLED
SELF PRIMING

550-5.5

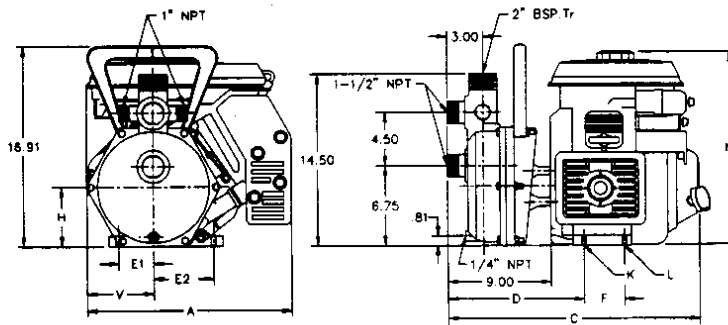
Impeller Diameter: 6.500 in.

C-3532 12/20/93



Supersedes: NEW

Based on Fresh Water @ 68 deg. F



ENGINE NAME & HP	A	C	D	E1	E2	F	H	K	L	N	V
BRIGGS & STRATTON 5.5 HP	14.34	19.72	10.48	2.60	4.33	3.15	4.17	(2) .35 X .75 SLOTS	(4) .35 DIA. HOLES	14.50	4.78
HONDA 5.5 HP	14.30	18.90	10.41	2.80	3.80	3.12	4.20	(2) .35 X .55 SLOTS	(2) .35 DIA. HOLES	13.20	4.90

Drawing Not to Scale

All Dimensions in Inches

SPECIFICATIONS

Max. Suction Lift _____ 25 ft
 Max. Liquid Temperature _____ 200 deg. F
 Max. Diameter Solids _____ 0.31 in
 Engine _____ B & S Vanguard 5.5 HP
 Optional Engine _____ Honda 5.5 HP

MATERIALS OF CONSTRUCTION

Casing _____ Die-cast Aluminum
 Impeller _____ Die-cast Aluminum
 Seal Housing _____ Die-cast Aluminum
 Shaft Sleeve _____ Stainless ASTM A581-A582 Type 303
 Diffuser _____ Die-cast Aluminum
 Neckring _____ Stainless Steel
 Mech. Seal _____ 316 Stainless Hardware/"Buna-N"
 Ceramic Seat, Carbon Rotating Face

SUPERSEDES

Section _____
 Dated _____
 Page **NEW**

Date 12/20/93

Section **AC**

Page 19.0

